

ReinPlatz

DIE REINE HAUT



Rein (Pure) + Platz (Space) = Clean Area

Clean Area where Clean Nature coexists with Healthy Beauty
ReinPlatz's Natural Stories Organic Cosmetics with the motto, Pureness

ReinPlatz is a naturalism cosmetic brand that makes customers beautiful utilizing natural benefits of Gochang, a clean area and pursues eco-friendly green life to keep environmental health. ReinPlatz Cosmetics made with natural ingredients gathered from Gochang represent coexistence with nature. Our cosmetics are made with a differentiated method together with fresh natural ingredients grown by local farmers.

Gochang is located in the south-west region of Korea, where was designated as protected biosphere reserve by the UNESCO. ReinPlatz will deliver energy obtained from fresh ingredients and clean nature to your heart and body.



Gochang,
UNESCO Biosphere Reserve
35° N 126° E



KOREA K-BEAUTY AWARDS
2018 K-뷰티를 이끈 우수기업 대상



Prize for SHEET MASK (REINPLATZ ESSENCE MASK SHEET)
REINPLATZ COSMETIC

The certificate of the '2018 Korea K-Beauty Awards' hosted by Women Dong-A and sponsored by Dong_A Ilbo is presented to your company in recognition to the exceptional brand value through superior quality and outstanding technology, elevating the status of K-Beauty.

■ Overseas Major Clients



- WISHH (Hong Kong)
- TOP & TOP ENTERPRICE (THE PASTEL SHOP) USA
- SHENZHEN GRAND SCOPE(China)
- FACEVEIL BEAUTY (Malaysia)
- Juvida Ltd (Lithuania)
- Rukn al-Tajmil (Saudi Arabia)

Domestic online/offline & overseas/e-commerce



행복한백화점(본점) Department store

아임쇼핑(인천공항 서편면세점) Duty Free Shop

신세계면세점(본점/부산센텀) Duty Free Shop

LOTTE Department store (REINPLATZ Brand store)

오픈마켓(쿠팡/롯데ON/지마켓/옥션/11번가/인터파크

네이버스마트스토어/위메프/티몬)

폐쇄몰(아이몰7/이지웰)

전문몰(패션플러스/아이스타일) / 레이틀리 웹

29CM

아마존(USA)

Qoo10(JAPAN)

Shopee.sg(싱가포르)





1. EqualiDerm Toner 120ml [Skin Balancing]

This toner contains the EqualiDerm™ and naturally derived pineapple extract to care for dry skin and soften the skin texture. EqualiDerm is obtained by the rice fermentation and helps to regulate the natural oil-water balance to perfect a clearer and cleaner skin. It provides deep moisturizing and nourishing to the skin and offers the skin protection capacity so that the skin can protect itself from external stimuli, presenting the moisturizing and firming efficacy.

EqualiDerm (Rice Ferment Filtrate) 97%

2. EqualiDerm Lotion 120ml [Hydration]

This total care lotion deeply moisturizes, nourishes and gently protects the skin, perfecting a radiant skin.

It contains EqualiDerm™ generated by the rice fermentation and Aquatide™ to care for the skin turnover and to provide the texture care for the skin which has lost its elasticity and vitality, presenting resilient and firmed skin texture and radiant and silky skin. Adenosine, collagen and ceramides improve skin wrinkles and perfect more elastic skin texture elastic. The arginine strengthens the skin's moisturizing film for the skin to maintain its rich moisture.

3. EqualiDerm Cream 50g [Skin Nourishing & Firming]

It contains EqualiDerm™ generated by the rice fermentation and Aquatide™ to care for the skin turnover and to provide the texture care for the skin which has lost its elasticity and vitality, presenting resilient and firmed skin texture and radiant and silky skin. Betaine, collagen, ceramide, arginine, macadamia oil and Carthamus Tinctorius (safflower) seed oil provide deep moisturizing to the skin for long-lasting hydration and radiance.

The silky formula gets gently absorbed to the skin to deliver moisture deep into the skin and softly wraps the skin texture. The subtle blending essential oil fragrance lingers around the skin, presenting long-lasting comfort.



4

4. EqualiDerm Essence 40ml [Hydration]

Imagine your skin feeling firmer and even more lifted day after day. Inspired by the latest lifting procedures, discover the power of a cosmetic lifting effect in a serum with our new

Aquatide™ is a serum for women that want visibly tighter, firmer and more lifted skin.

Skin will look re-plumped and facial contours will look more defined. See firmer, plumper skin in just.



5

5. EqualiDerm Eye Cream 20g [Anti Wrinkles & Firming]

A Lifting And Firming Cream For Wrinkles And Fine Lines Under Eye
A eye cream that visibly lifts and firms, while reducing the appearance of fine lines, wrinkles and under eye dark circles.

With a customer favorite formula, this is the best eye cream for visibly lifting and firming. It is designed with caffeine, hyaluronic acid, and Aquatide™. Eye contours will feel smoother and look suppler, while wrinkles and under eye dark circles will appear reduced for younger-looking eyes.

Eye Cream in the morning and evening using a gentle patting motion around the delicate browbones, under eye, and crow's feet areas. Can be used underneath makeup.



AQUATIDE 5000

INCI name : Hexacarboxymethyldipeptide-12

AQUATIDE 5000

LiftDerm 2000

AdipoSOL™ 2000

BioRedoxyl

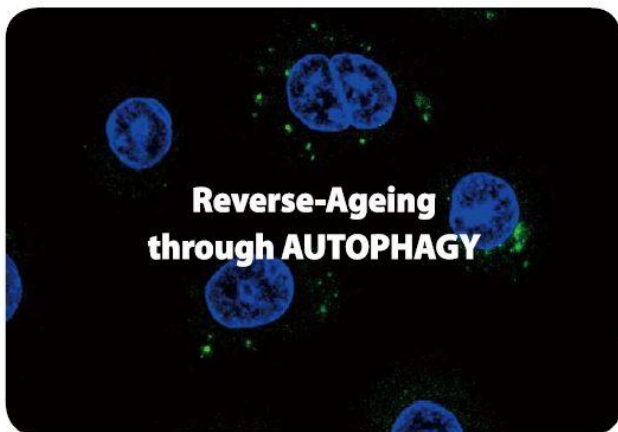
Wasabi Flavone

Pineapple Ceramide

rhEGF



2016 노벨 생리 의학상 수상
AUTOPHAGY 활성화 원료



In-Cosmetics Asia
ASIA 최초 Gold Medal 수상

인코스팜이 독자적으로 연구 개발한 **AUTOPHAGY(자가포식)** 활성 원료 **AQUATIDE**는 혁신적인 컨셉과 효능을 인정받아 유럽 회사들만의 무대였던 in-cosmetics에서 아시아 최초로 Gold medal을 수상 그 가치를 세계적으로 인정 받았습니다.

AQUATIDE의 메인 컨셉인 **AUTOPHAGY**는 세포의 낡은 단백질을 재활용하여 건강한 세포로 재생시키는 새로운 개념의 Anti-Ageing으로 2016년 자가포식 이론을 연구/개발한 오스미 요시노리 교수에게 **노벨 생리의학상** 수상의 영광을 안겨주었습니다.

[Aquatide & MelaTrepein]

EqualiDerm, the skin balance regulating ingredient, & Aquatide, the autophagy ingredient with anti-aging function

MelaTrepein, a superb brightening ingredient decomposing melanin

Superb Brightening Functional Serum to Improve Dull and Unbalanced Skin Tone

We focused on transforming unbalanced skin into a clearer and healthier skin. In particular, we have analyzed the causes of dull skin from various perspectives and designed this product to improve blemishes, inflammation, pigmentation by friction and dark circles. It minimizes unnecessary oil and prevents pore blocking, making it perfect for all skin types.

“Brightuning Peptide Ampoule” contains MelaTrepein, the superb brightening ingredient, as well as EqualiDerm, skin balancing ingredient which is developed by joint research with INCOSPHARM, Aquatide, the autophagy ingredient for anti-aging and Dipeptide 2, body fluid circulation improvement ingredient improving dark circles. Because the product contains highly-concentrated peptide-based core ingredients, it has been development in cooperation with the ingredient company from the initial planning stage for effective and stable formula.

Aquatide

The basic concept is the anti-aging mechanism of Aquatide, which activates the nourishing ingredients by breaking down and recombining the skin aging ingredients.

Aquatide, which strengthens the skin's original capability, fosters the power of face skin and provides the intensive care to local areas.

Functional Serum Helping the Skin To Be Healthy by Itself Based on Scientific Principles

- * Received the Gold Award at In-Cosmetic Asia 2016
 - Gold award at the In-Cosmetic Asia, the global ingredient award
- * Ingredients Attracting Attention in the Global Market
 - Registered the patents in 4 countries including USA, Japan, Europe
- * Incorporation of Autophagy Technology, the Nobel Prize for Medicine
 - Ingredients based on the Autophagy principle, which won the 2016 Nobel Prize in Medicine

Aquatide 5000

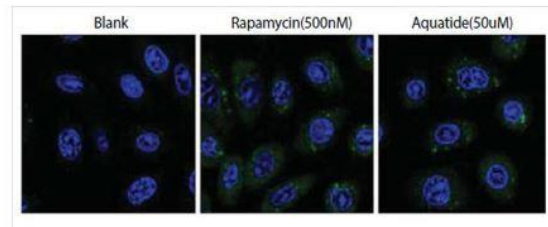
Natural moisturizing factor (NMF) in the stratum corneum has a high moisture retaining efficacy, and plays a major role in the skin barrier function. Pyrrolidone carboxylic acid (PCA) is one of the major NMF found in human skin. **Aquatide**, PCA-mimetic peptide, increases moisturization, reduced Trans Epidermal Water Loss (TEWL) and improves the skin barrier function.

Autophagy is the natural destructive mechanism that allows the orderly degradation and recycling of cellular components. Increased autophagy delays aging and extends longevity.

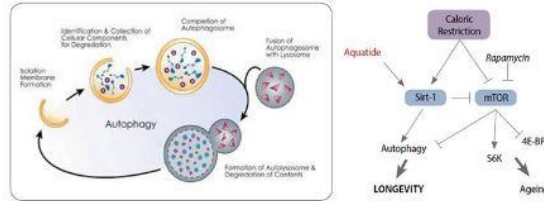
Sirtuin1 (SIRT1) is a nicotinamide adenine dinucleotide (NAD⁺) -dependent deacetylase functioning in the regulation of metabolism, cell survival and organismal lifespan. Active SIRT1 regulates the autophagy during cell stress, including calorie restriction, endoplasmic reticulum (ER) stress and oxidative stress.

Aquatide (INCI name : Hexacarboxymethyldipeptide-12), the first known peptide-derived SIRT1 activator, activates SIRT1 by direct interaction. Through this interaction **Aquatide** increases a deacetylation of SIRT1 target protein FoxO1, resulting in the cell protective autophagy.

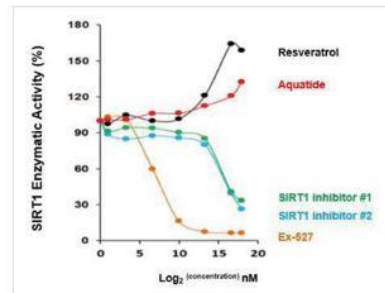
Aquatide activates autophagy



Normal keratinocyte cells were treated with Aquatide or rapamycin for 24 hours, fixed, and labeled using anti-LC3A Ab/FITC labeled 2nd Ab/DAPI. Aquatide treatment increases LC3 puncta formation (green dots) similar as rapamycin.



Aquatide activates SIRT1



Recombinant SIRT1 and its substrates were mixed with Aquatide and others, and measured the deacetylation activity of SIRT1 using fluorometric analysis. Aquatide activated SIRT1 enzymatic activity like resveratrol.

What is Autophagy?

"Recycling substances generated by decomposing cells that have reached the end of their lifespan as the nutrients for healthy cells"

Usage Tips:

* For Topical Care

Apply the product like layering to areas around eyes, mouth and skin troubles.

* With A Mask Pack

Apply it thickly on entire face, pat the skin lightly like massaging and use the mask pack sheet.

* Before Makeup

Mix it with cushion compacts and foundations for more moistness and softness.

The key to improving wrinkles lies in strengthening them, not straightening them. If you already have wrinkled skin, it is not enough to stretch the surface wrinkles. It works on 3 factors of wrinkles to strengthen the epidermis, dermis and lipid layers with moisture and elasticity.

01 Lifting

Intensive Care for 3 Factors of Wrinkles

Enhances the epidermis, dermis and subcutaneous fat as well as the visible areas to improve wrinkles from the root.

02 Firming

Entire Face and Local Areas

Fills the entire face with highly-concentrated Aquatide and effectively improves wrinkles around the eyes and mouth.

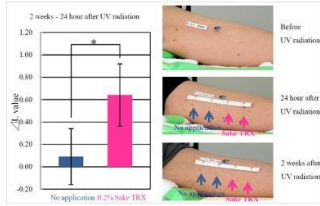
03 Moisturizing

Functional Wrinkle Improvement Cream

This product adds nourishing and moisturizing and protects the skin so that the skin strengthened by Aquatide can maintain its strength and control the skin troubles.

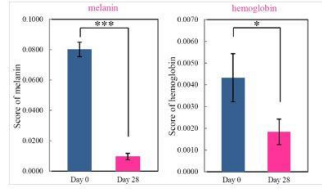
효능/효과

1. UV irradiation에 의한 피부 홍조 현상 개선 효과



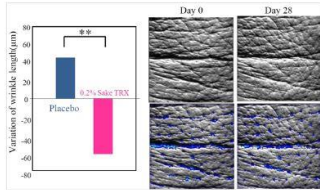
UV irradiation 후에 0.2% Bioredoxy가 포함된 제형을 2주간 2회/1일 도포한 결과, 피부 홍반 현상이 의미있게 개선되었습니다. (measured by a spectro colorimeter CM-2600d)

2. 피부 톤 개선 효과



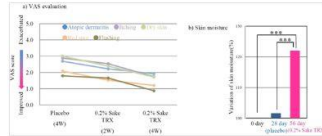
0.2% Bioredoxy가 포함된 제형을 4주간 2회/1일 도포한 결과, skin toning의 주된 척도인 melanin과 hemoglobin 수치를 유의적으로 감소시키는 결과를 제공했습니다. (measured by a VISIA Evolution)

3. 주름 깊이 개선 효과



0.2% Bioredoxy가 포함된 제형을 4주간 2회/1일 도포한 결과, 주름의 깊이가 알아지는 효과를 제공했습니다. (measured by a reflective replica analysis system ASA-03RXD)

4. 성인 아토피 피부 개선 효과



아토피 피부질환을 가지고 있는 성인을 대상으로 0.2% Bioredoxy가 포함된 제형을 4주간 도포한 결과, atopic dermatitis 증상의 개선이 나타났습니다. (measured by a moisture checker MY-808S)

Extracts

INCI name : Ananas Sativus (Pineapple) Fruit Extract

Chinese INCI name : 菠萝 (ANANAS SATIVUS) 果提取物



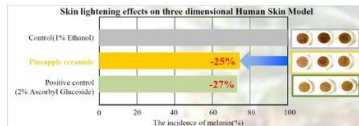
Pineapple ceramide



세라마이드(ceramide)는 피부 장벽 기능 강화에 매우 중요한 물질로 다양한 피부 관리 제품의 주 원료로 이용되고 있습니다. 다양한 세라마이드 중에서 파인애플 세라마이드는 당이 결합되어 있는 당세라마이드(glucoceramide)로, 제형 제조 편의성이 높을 뿐 아니라, 피부에 도포 시 피부 내 세라마이드 등과의 상호 작용이 매우 뛰어나 신속한 피부장벽 기능 회복을 가능하게 합니다.

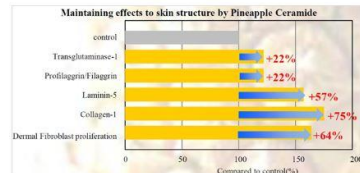
효능/효과

1. 피부 미백 효과



파인애플 세라마이드는 3D 인공피부 모델에서 2% ascorbyl glucoside와 비슷한 수준의 멜라닌 생성 억제 효과를 제공합니다.

2. 피부 구조 유지 효과



피부 구조 및 장벽 기능에 매우 중요한 profilaggrin/filaggrin, transglutaminase-1, laminin-5, collagen-1의 발현을 증가시킬 뿐만 아니라 fibroblast cell의 증식을 촉진시킴으로 피부 구조를 건강하게 하는 효과를 제공할 수 있습니다.

EqualiDerm

The yeast / rice ferment filtrate, not purified water, balances the skin and fills the nutrients, and the pineapple extract from pineapple strengthens the skin barrier by enhancing the bond between keratinocytes protecting skin.

Glyceryl Glucoside (2GG) activates Aquaporin* to boost the skin moisture transfer effect.

Understanding the Logic of Ingredients and Raw Materials

*** EqualiDerm (Rice Ferment Filtrate):** It regulates the antioxidation system of the cell and contains the highly-concentrated Thioredoxin that reduces the stimulation such as oxidation, inflammation, etc.

*** Pineapple Extract:** This naturally derived ingredient is obtained by extracting the pineapple juice which has the highest ceramide content among fruits and contains vitamin C, vitamin B1 and citric acid, which are essential for skin health.

*** Aquaporin:** This membrane protein regulates the entry and exit of water into a cell. Known as the water passage in the body, it increases water permeability because it moves water faster than ions.

EqualiDerm replenishes elements damaged during the face wash to maintain the healthy skin balance.



6. Dual Layer Mix Essence 30ml

[Skin Vitality / intensive Moisturizing / Moisture Retention]

Special moisturizing essence to create the moisture film on dry and rough skin for long-lasting glowing skin

■ Blending Plant Derived Oil: Plant derived oils extracted from macadamia seeds, Pelargonium Graveolens flower and jojoba seeds create a moisturizing film on dry skin for long-lasting moisturizing.

■ Moisturizing Essence: This moisturizing essence filled with nourishing energy concentrated with plant nutrition provides vitality and radiance to your skin for clearer and cleaner skin tone. AHA / BHA / PHA are contained to smooth out the dead skin cells and perfect the silky and clear skin.

How to Use :

After face wash in the morning and evening, apply the toner for smoother skin texture. Then, apply 2 - 3 drops of the product onto your skin and massage your skin for better absorption. (Before use, shake it to evenly mix the separated layer.)



7. EGF Repair Concentrate Cream 30g

Rh-Oligopeptide-1 (EGF / Epidermal Growth Factor), rh-Oligopeptide-1 (bFGF / Basic Fibroblast Growth Factor) and rh-Oligopeptide-2 (IGF / Insulin-Like Growth Factor 1) are contained to strengthen the skin barrier, soothe and protect the skin irritated by the external environment.

Peptides, allantoin and plant extract provide the vitality and radiance to tired skin.

EGF(rh-Oligopeptide-1)

This helps collagen synthesis inside of the skin and thus, enhances the skin activity reduced by aging.

By activating the skin turnover cycle, it helps the transition to a new skin layer, promoting the healthy skin care.

- Protects skin and provides conditioning for healthier and more energetic skin care.
- Easily absorbed into the skin to maintain the hydration.
- Helps revitalize the skin by providing the vitality and energy to the tired and aged skin.

bFGF(rh-Polypeptide-1 / Basic Fibroblast Growth Factor)

- Provides the conditioning to the skin for the vital skin care.
- Gets involved in the activation of skin cycle recycling and helps transition to new skin layers to maintain the healthy skin condition.
- Gets involved in the synthesis of collagen protein, which is related to skin firming and helps improvement of skin activation reduced by aging and wrinkled skin texture care to perfect the skin with more vitality and younger energy.

IGF(rh-Oligopeptide-2) Also known as IGF (Insulin-like Growth Factor 1), it is a peptide generated in peripheral tissues and plays a key role in the growth of each skin layer.

- It is structurally similar to insulin composed of numerous amino acids, so it's called "insulin positive growth factor" or "insulin-like growth factor" and it helps growth and activation of the skin layer.
- Somatomedin C is a growth factor known as the sulfation factor and performs various cellular physiological functions. Also, it is associated with EGF and other growth factors to help cell growth and division and promotes the protein generation to maintain skin elasticity such as collagen, elastin and keratin.
- It gets involved in the activity of collagen and elastin in the skin to promote the improvement toward a healthier and firmer skin.

How to Use : Take an appropriate amount, gently apply to the entire face from inside to outside and softly pat the skin for better absorption.

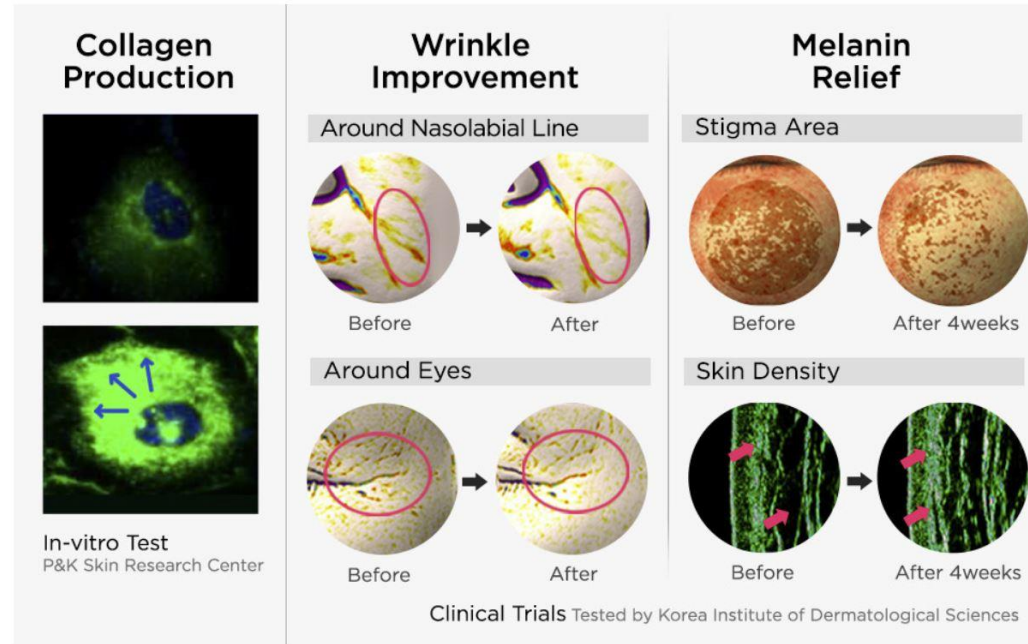
About this item

•**WHAT IS EGF?** - Known as 'YOUTH PROTEIN', EGF is a natural protein in our body that produces collagen and elastin. EGF replenishes the collagen and elastin to improve signs of aging such as wrinkles, sagginess, redness, fine lines, and dark spots. It helps the skin flush away toxins and increases hydration, with statistical evidence.



Skin Protein
which rejuvenates skin &
controls aging

EGF?
Epidermal
Growth
Factor



EGF is a scientifically proven "Youth Protein" in our bodies that decreases as we age (Nobel Prize in 1986; WHO registered as "Nepidermine") Use to replenish cells and stimulate natural collagen, elastin, hyaluronic acid production in our skin to revitalize and rejuvenate

How to Use : Apply an appropriate amount of product on the forehead, cheeks and chin. Rub and massage the skin in an upwards circular motion for optimum skin absorption.

8



8. Skin Barrier Intense Cream 50g

[Skin Nourishing & Firming]

This ultra-moisturizing & ultra-nourishing cream provides intensive care to dry skin, dull skin and decreased skin elasticity and creates moisturizing film while applied gently on the skin.

INFLAX Herbal Complex helps skin soothing, nourishing and firming. Filtered snail mucus, allantoin, and arginine provide moisture to the skin to maintain moisture and glossiness.

How to Use : Take an appropriate amount, gently apply to the entire face from inside to outside and softly pat the skin for better absorption.

9



9. AHA 10 Lotion 200ml

[Hydro Moisturizing & Soft Feel]

Naturally derived fruit acid and apricot seed oil are contained to help exfoliation of dead skin cells and to maintain the skin moisturizing, perfecting a moisturized and silky skin texture.

Hyaluronic acid, allantoin and green tea extract moisturize the dry skin and strengthen the skin's moisturizing film for long-lasting moisturizing. Macadamia seed oil and lavender oil promote skin moisturizing and soothing.

How to Use : After the toner, gently apply a proper amount to the face except the eye area and softly pat the skin for better absorption. Apply the moisturizer on it.
(If AHA 10 Lotion and moisturizing products are used together, it helps keep the skin moisturized for a long time.)

10



10. UREA Moisture Cream 100g

[Hydrating & Moisturizing]

Hyaluronic acid, allantoin and green tea extract moisturize the dry skin and strengthen the skin's moisturizing film for long-lasting moisturizing. Macadamia seed oil and lavender oil promote skin moisturizing and soothing.

How to Use : After the toner, gently apply a proper amount to the face except the eye area and softly pat the skin for better absorption. Apply the moisturizer on it.
(If AHA 10 Lotion and moisturizing products are used together, it helps keep the skin moisturized for a long time.)



11

11. Enzyme Cleansing Powder Wash 50g

[Enzyme Powder Wash for Mild Cleansing]

This powder-type soft cleanser helps soft cleansing with silky foam, and enzyme *(papaine enzyme) gently washes away wastes and dead skin cells away from the pores, perfecting a clearer and healthier skin.

How to Use: At face wash stage, remove the make-up first. Take a proper amount on hand and place some water. Generate enough foam and wash your face with the foam.

(STEP 1) Moisten your face and hands with water, then place a proper amount of powder (0.5g / coin size) on one hand. (STEP 2) Moisten the other hand and rub two hand with the powder. Generate enough foam and wash your face gently like massaging.

12



12. Reversal Oil To Foam Cleanser 200ml

Smooth and gentle, this emollient-rich, oil to foam cleanser gently melts away makeup and impurities. The instantly comforting formula contains Honey and Sweet Almond Extracts to condition and pamper skin, leaving it feeling clean, silky-soft and soothed.

This milky cream cleanser gently melts away makeup and impurities. Made with Honey and Sweet Almond Extracts, the instantly comforting formula leaves skin feeling soft, supple, clean and comforted.



Enzyme Cleansing Powder Wash 50g

[Enzyme Powder Wash for Mild Cleansing]

Give your glow a boost with this powder cleanser.

Gentle enough for daily use, this unique formula transforms from a powder into a creamy cleanser as soon as you add water.

Papaya enzyme (papain) activates on contact to gently dissolve dead skin and give skin a softer, smoother feel. Ascorbic acid helps illuminate dull skin for an overall glowing complexion.

+Powder Cleanser

This cleanser comes in powder form but turns into a creamy cleanser when water is added.

This powder cleanser deeply cleanses pores, dissolves impurities, boosts skin and smooths out uneven skin textures

Daily non-abrasive exfoliator for normal to sensitive skin types.

Water activated enzyme powder that transforms to a creamy foam for a smooth and gently cleansed skin with a glow.

This powder-type soft cleanser helps soft cleansing with silky foam, and enzyme *(papaine enzyme) gently washes away wastes and dead skin cells away from the pores, perfecting a clearer and healthier skin.

+Gentle Exfoliation

Powder to foam exfoliating daily cleanser that removes dead skin cells, impurities, and makeup residue while leaving skin moist.

+Daily Usage

Dispense powder onto your palm, add a small amount of water, and fully lather. Massage onto face, avoiding the eye area and rinse with warm water.

How to Use: At face wash stage, remove the make-up first. Take a proper amount on hand and place some water.

Generate enough foam and wash your face with the foam.

(STEP 1) Moisten your face and hands with water, then place a proper amount of powder (0.5g / coin size) on one hand.

(STEP 2) Moisten the other hand and rub two hand with the powder. Generate enough foam and wash your face gently like massaging.



Reversal Oil To Foam Cleanser 200ml

Double cleanse in One Wash: Resolves the problem of complicated double facial cleansing with a new formula that an oil cleanser transforms to a foam cleanser! Provides a smooth finish without any oil residue with low-irritant plant-derived foam generated upon contact with water that melts makeup residue softly.

This oil to foam cleanser removes makeup, impurities, sunscreen and leaves the skin feeling fresh and clean. Save time every morning and night with this 2 in 1 cleanser.

+Double Cleanse (2 in 1 Oil and Foam)

Transforms from a cleansing oil that breaks down makeup, into a light, airy foam with the addition of water for a gentle and moisturizing cleanse

+Antioxidant-Rich Formula

Infused with antioxidant-rich Damask Rose Oil, experience spa-quality cleansing at home every day for your skin

+Light Moisturizing Wash

Soapberry Extract naturally suds up to a light, airy foam

+Argan Oil: Argan Oil is a natural source of omega 6 fatty acids & Vitamin E that you need to have a beautiful glowing skin. Argan Oil works as a great moisturizer for skin and scalp. It softens the skin and gives it a healthy and natural appearance. It promotes hair growth and makes hair look strong & shiny.

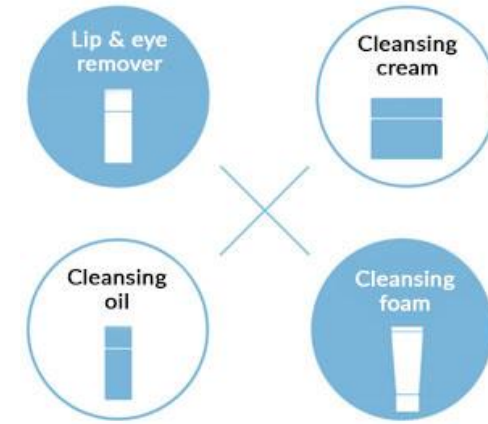
+ Trehalose

Trehalose belongs to small molecule moisturizer and can be used as a skin penetrant to increase skin's absorption of nutrients. It can also increase the hydration function of skin cells, effectively prevent skin roughness, and give skin radiance and shiny

The instantly comforting formula contains Betaine and Blue Complex to condition and pamper skin, leaving it feeling clean, silky-soft and soothed.

+GENTLE, EFFECTIVE CLEANSING: Luxurious oil cleanser transforms into a rich foam to thoroughly remove dirt and grime from pores while leaving skin feeling soft and hydrated.

+CLEAN INGREDIENTS: Free of synthetic fragrances, artificial dyes, parabens, PEGs, phenoxyethanol, mineral oil, silicones, sulfates, and phthalates. Suitable for all skin types and all ages.



Reversal Oil To Foam Cleanser oil recipe

With Argan Oil, Meadow Foam Seed Oil, Safflower Seed Oil, and Betaine, Trehalose, Cocobetaine

Transforming from oil to foam

Abundant foam generated from oil upon contact with water.

Multi-action cleanser

Dual and triple facial cleansing all at once without any complicated steps!

How to use: Take an adequate amount with a dry hand and gently massage the entire face to melt impurities. Add a small amount of water to lather up then rinse off with lukewarm water.

STEP 01: Dispense 3~4pumps of the oil foam. Evenly apply on the face with makeup and gently massage melting makeup with the fingertips. (Use 1~2pumps for morning facial cleansing)

STEP 02: Wet your hands with water, lather and cleanser the face.

STEP 03: Wash off with lukewarm water and rinse the face with cold water as a finishing touch.

This oil foam is recommended to those who want to reduce irritation to the skin by reducing cleansing steps, who still have dry skin after deep cleansing, and those who want their skin care to feel like spa care.



13

13. Berry Bubble Foam Cleanser 150ml

[Cleansign & Skin Balance]

This contains abundant naturally derived ingredients such as coconut-derived coco-betaine, Euterpe Oleracea and INFLAX herbal complex to minimize the dryness and skin pulling even after cleansing and to remove makeup residues and skin wastes.

Betaine, Korean raspberry, aloe vera leaves, and rosewood oils moisturize the skin to maintain freshness and moist and help the water-oil balance.

How to Use : 1. Moisten your face with clean lukewarm water. 2. Pump the appropriate amount in watery condition, apply soft foam to the entire face and keep it for 5 - 10 seconds. 3. Pump again and apply the foam like massaging and wash off with lukewarm water.



14

14. Calming Purifying Cleanser 200ml

[Smoothing and Purifying]

Energize your skin with this anti-fatigue, purifying foam cleanser! non-drying formula deeply cleans the skin and removes makeup, for a smoother complexion and improved glow. After use, skin feels softer, suppler, and refreshed. Pores appear tightened, and skin looks clearer and more radiant.

How to Use: Wet skin and dispense a dime-sized amount onto fingertips. Gently massage onto the face. Rinse with warm water, pat dry. Follow with essence and moisturizer.

15



15. Calming Sensitive Toner 200ml

[Clarifying Exfoliating Toner]

This refreshing toner exfoliates and purifies in one easy step.

The gentle formula made with antioxidant White Lotus and clarifying Anise Extract helps speed up cell turnover to improve skin tone, texture and clarity.

Skin feels soothed & Hydrates skin for a soft feel



16. Calming Sensitive Serum 30ml

[Skin Balance]

This Serum contains AHA extracted from fruit for keratin care to perfect silkier and clearer skin.

Herbal extracts such as centella asiatica water, tea tree, lavender, rosemary and peppermint improve the water-oil balance of sensitive skin, relieve the skin reddened by the external environment and perfect the radiant skin.

■ AHA / BHA / PHA are contained to smooth out the dead skin cells and perfect the silky and clear skin.

How to Use :

After caring the skin texture, take an appropriate amount, gently apply to the entire face and softly pat the skin for better absorption.



17. Calming Sensitive Cream 50g

[Skin Balance]

This cream contains AHA extracted from fruit for keratin care to perfect silkier and clearer skin.

Herbal extracts such as centella asiatica water, tea tree, lavender, rosemary and peppermint improve the water-oil balance of sensitive skin, relieve the skin reddened by the external environment and perfect the radiant skin.

■ AHA / BHA / PHA are contained to smooth out the dead skin cells and perfect the silky and clear skin.

How to Use :

Take an appropriate amount, gently apply to the entire face from inside to outside and softly pat the skin for better absorption.



18.Boosting Serum : Anti-aging repair 20ml

[Anti-wrinkle / Skin Barrier / Lifting: Advanced Face Repair Treatment]

3.1% EGF+ Aquatide™

Gentle enough for daily use, this unique formula transforms from a powder into a creamy cleanser as soon as you add water.

Anti-Aging Repair For Face - As you grow older, the skin loses its vitality, leaving it dull, dry and dehydrated. Anti-aging repair Boost Serum contains EGF and Aquatide™ that helps fight against wrinkles and spots. Including Anti-aging repair Serum in your daily skin care, helps add moisture on face and skin, nourishes the skin and helps to retain its natural glow.

+EGF(rh-Oligopeptide-1)

This helps collagen synthesis inside of the skin and thus, enhances the skin activity reduced by aging. By activating the skin turnover cycle, it helps the transition to a new skin layer, promoting the healthy skin care.

- Protects skin and provides conditioning for healthier and more energetic skin care.
- Easily absorbed into the skin to maintain the hydration.
- Helps revitalize the skin by providing the vitality and energy to the tired and aged skin.

+Aquatide

The basic concept is the anti-aging mechanism of Aquatide, which activates the nourishing ingredients by breaking down and recombining the skin aging ingredients.

Aquatide, which strengthens the skin's original capability, fosters the power of face skin and provides the intensive care to local areas.

+Panthenol

Panthenol is a non-sticky moisturizing ingredient. It is similar to the sebum of the skin. It can easily be absorbed and penetrate the stratum corneum of the skin surface, making the skin soft and preventing skin from roughness

+Amino Acid Complex: 9 essential amino acids (Lysine, Phenylalanine, Valine, Leucine, Isoleucine, Threonine, Methionine, Histidine, Arginine), 8 non-essential amino acids (Glycine, Serine, Proline, Tyrosine, Cysteine, Alanine, Aspartic acid, Glutamic acid) with a total of 17 amino acids

+Adenosine Plus helps to soothe fine lines, tighten your skin, nourish it inside out

How to Use: Take an appropriate amount, gently spread all over the face, gently tap and absorb.



+ Aquatide™ :

Activate autophagy and Reinforced skin barrier ingredients contained Aquatide (Patent: USP 9,359,401)

Aquatide contains antioxidants and strengthens the skin barrier and the moisture collection channel to prepare the basic environment in which various active ingredients can work properly to heal the tired and stressed skin.



Improves Skin barrier function and anti-ACNE efficacy



Sixteen volunteers were applied with 50ppm Aquatide and 0.5% salicylic acid formulation for 4 weeks. Skin conditions were evaluated by dermatologist. Aquatide has a strong anti-inflammatory activity, and reduced average 65% of ACNE symptoms.



19.Boosting Serum : Hydro glow 20ml

[Skin Brightening Serum for Face]

54% Vitamin C(Ethyl Ascorbyl Ether) + Vitamin B3(Niacinamide) + Melatrepein TM

PERFECT FOR ALL SKIN TYPES - Helps with hyperpigmentation, fade scars and reduce fine lines. Also makes a great dark spot corrector for face. Can be used around the under eye area to help with dark circles and wrinkles. Great for women and men for daily use with maximum prescription strength effectiveness yet gentle enough for sensitive skin and is non comedogenic. Can be used day and night.

Advanced Antioxidant Serum - An indispensable nutrient for collagen production, vitamin C blends with Botanical Hyaluronic Acid and Vitamin E, designed to target the most common signs of aging, including brightness, firmness, fine lines, wrinkles, dark spots & sun spots.

Stimulate Collagen Formation - Vitamin C is responsible for collagen production. Boosting your skin and body with Vitamin C Serum will enhance the natural formation of collagen that is the number one component for connecting tissues for skin health. No oily residue left behind. Absorbs quickly without a heavy, greasy or sticky feel.

+ Vitamin C (Ethyl Ascorbyl Ether)

Advanced Antioxidant Serum - An indispensable nutrient for collagen production, vitamin C blends with Botanical Hyaluronic Acid and Vitamin E, designed to target the most common signs of aging, including brightness, firmness, fine lines, wrinkles, dark spots & sun spots.

+Vitamin B3 (Niacinamide)

- 1) Reduces pigmentation by preventing melanin pigment from migrating to the epidermis.
- 2) Suppresses sebum secretion, and improves irritation caused by oily skin.
- 3) Helps stabilize vitamin C, having enhanced effects when used with vitamin C.

How to Use: Take an appropriate amount, gently spread all over the face, gently tap and absorb.



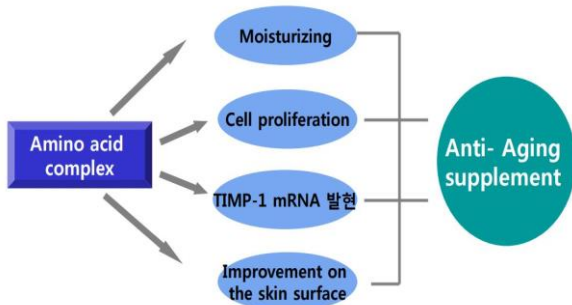
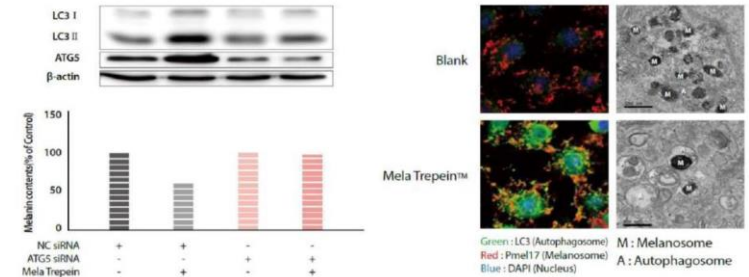
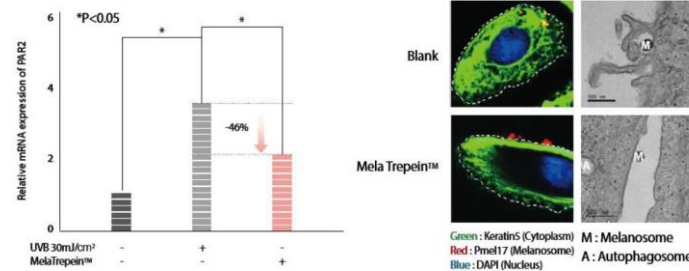
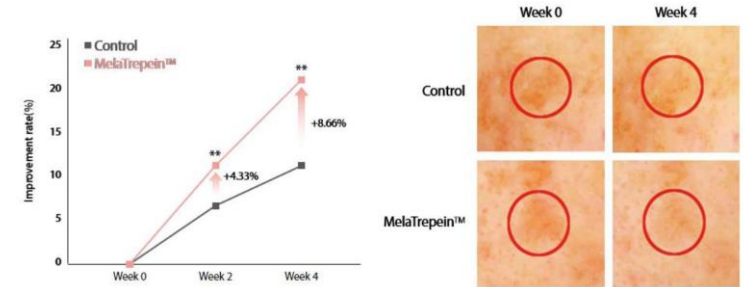
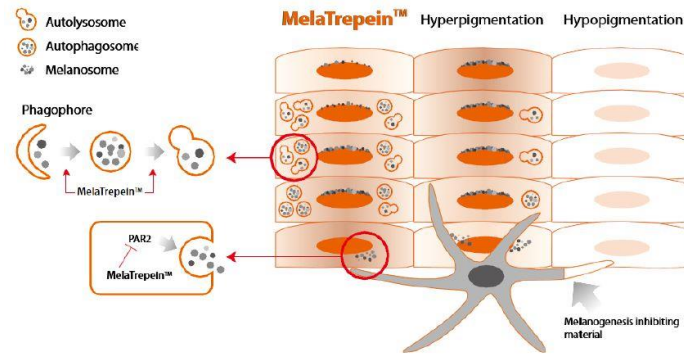
Booting Serum : Hydro glow 20ml

[Skin Brightening Serum for Face]

+ Melatrepein™

Relieves hyperpigmentation, improves skin tone.

MelaTrepein enhances the activity of decomposing melanosomes present in excess in keratinocytes through autophagy activation.



+Amino Acid Complex™ : 9 essential amino acids (Lysine, Phenylalanine, Valine, Leucine, Isoleucine, Threonine, Methionine, Histidine, Arginine), 8 non-essential amino acids (Glycine, Serine, Proline, Tyrosine, Cysteine, Alanine, Aspartic acid, Glutamic acid) with a total of 17 amino acids



20.Boosting Serum : Skin purity 20ml

[Purifying / Skin Barrier /]

77.3% Azulene + Arginine + AdipoSOL™

Skin Soothing : Enriched skin soothing ingredient, Guaiazulen, instantly calms and protects a sensitive skin.

Skin Barrier Reinforcing : Formulated Arginine ingredient helps protect skin and reinforce a skin's barrier to prevent moisture loss.

Skin Irritation relief : Enriched skin soothing ingredients helps soothe skin irritations while relieving stressed skin.

Natural ingredient's plain color : The cream glows its natural ingredient's plain blue color without using any artificial pigment.

+ AdipoSOL™

AdipoSOL™ 2000 is a proprietary raw material that protects the skin from various environmental stresses including UV by increasing autophagy, Adiponectin expression and MED.

1)Collagen recovery

AdipoSOL™ has various functions to protect the skin from environmental stress (Adiponectin & Collagen recovery, MMP-1 & inflammatory cytokines inhibition).

2)Relieves the color of erythema

+ Azulene

Azulene is an effective skin soothing and helps to comfortably calm skin sensitive to external conditions and dry weather.

Sensitivity calming violet-colored 'Guaiazulene' contained

Soothes Skin: Azulene is the active ingredient of chamomile. It has antibiotic and anti-inflammatory properties, this helps prevent ingrown hairs. It works to soothe and repair skin, keeping it soft and healthy.

How to Use: Take an appropriate amount, gently spread all over the face, gently tap and absorb.

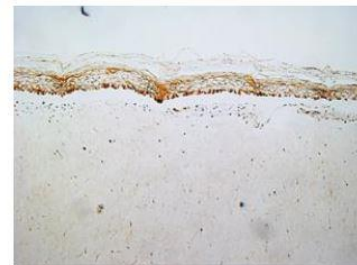


Boosting Serum : Skin purity 20ml

[Purifying / Skin Barrier /]

+ AdipoSOL™

AdipoSOL™ 2000 is a proprietary raw material that protects the skin from various environmental stresses including UV by increasing autophagy, Adiponectin expression and MED.



Blank (Non-UVB)



Blank (UVB 100 mJ/cm2)



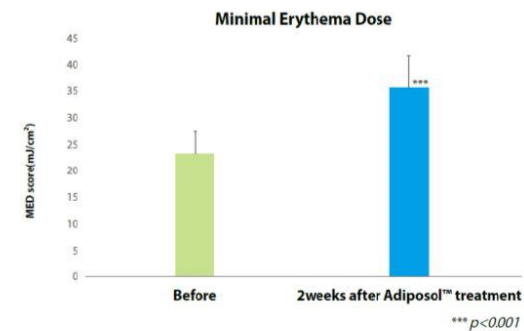
UVB + AdipoSol™



Vehicle



AdipoSol™



21



21. Softening Wash Off Pack [Green Tea] 100g [Sebum / Skin Waste Control + Soothing Convergence]

The naturally derived ingredient, the mixture of finely ground green tea leaf and cypress, is superb in moisture supply, provides a supple skin care and perfectly removes the skin wastes, presenting a fresh finish. Naturally derived extracts, Centella Asiatica, Korean raspberry, purslane and more, soothe the irritated skin. Aloe vera leaf and Euterpe Oleracea Fruit Extract facilitate pore tightening and water-oil balance.

How to Use : 1. After face wash, apply an appropriate amount on the dry face except for the eyes and the mouth. If the pack is completely dry after 20-30 minutes, roll gently and rinse thoroughly with lukewarm water.



About this item

- ✓ **CLEARING**-Skin Waste Control + Keratin / Pore Tightening. Our Charcoal sourced from Korea, has extraordinary absorption powers. It acts like a magnet on the skin to draw out impurities, especially for urban skin, subjected to dirt, oil, and pollution.
- ✓ **ANTIOXIDANT**-The charcoal is contained to care for blackheads and whiteheads, and gets applied along the skin texture, closely caring for the inside of pores.
- ✓ **HELPS TREAT ACNE + SOOTHING**-Naturally derived extracts, Centella Asiatica, Hamamelis Virginiana Leaf and Korean raspberry soothe the irritated skin.
- ✓ **DEEP MOISTURIZING**-Aloe vera leaf and Euterpe Oleracea Fruit Extract facilitate pore tightening and water-oil balance. Shea butter and Euterpe Oleracea Fruit Extract soften the skin which became rough and dry skin from the external environment.

Key Ingredients & Products Benefits



Rough & dry skin from the external environment.

Shea butter and Euterpe Oleracea Fruit Extract soften the skin which became rough and dry skin from the external environment.



Soothe the irritated skin

Naturally derived extracts, Centella Asiatica, Hamamelis Virginiana Leaf soothe the irritated skin.



BLACK RASPBERRY: Highly effective in anti-oxidation

Rubus coreanus fruit(Black raspberry), highly effective in anti-oxidation, offers glow and radiance to the skin complexion.



Moisturizing & Balance

Aloe vera leaf extract facilitates pore tightening and water-oil balance.



22

22. Softening Wash Off Pack [Red Ocher] 100g

[Oiliness Care / Skin Waste Control + Keratin / Pore Tightening]

The naturally derived ingredient of finely ground red clay removes the dead skin cells and transforms the rough and dark skin into a bright and silky skin. The red clay powder free from irritation gets applied along the skin texture and cares for the inside of the pores. Naturally derived extracts, Centella Asiatica, Korean raspberry, purslane and more, soothe the irritated skin. Aloe vera leaf and Euterpe Oleracea Fruit Extract facilitate pore tightening and water-oil balance.

How to Use : 1. After face wash, apply an appropriate amount on the dry face except for the eyes and the mouth. If the pack is completely dry after 20-30 minutes, roll gently and rinse thoroughly with lukewarm water.



23



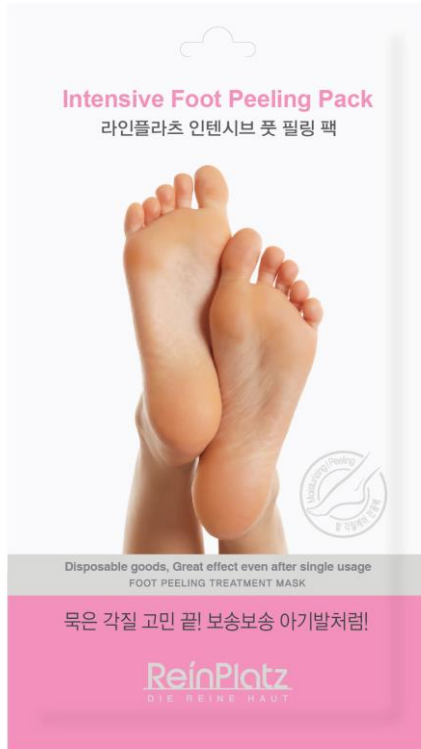
23. Softening Wash Off Pack [Charcoal] 100g [Skin Waste Control + Keratin / Pore Tightening]

The charcoal is contained to care for blackheads and whiteheads, and gets applied along the skin texture, closely caring for the inside of pores.

Shea butter and Euterpe Oleracea Fruit Extract soften the skin which became rough and dry skin from the external environment. Naturally derived extracts, Centella Asiatica, Hamamelis Virginiana Leaf and Korean raspberry soothe the irritated skin. Aloe vera leaf extract facilitates pore tightening and water-oil balance.

How to Use : 1. After face wash, apply an appropriate amount on the dry face except for the eyes and the mouth. If the pack is completely dry after 20-30 minutes, roll gently and rinse thoroughly with lukewarm water.





24

24. Intensive Foot Peeling Pack 30ml/1Pair

[Disposable goods, Great effect even after single usage]

- Disposable goods, Great effect even after single usage • Simple socks-typed peeling masks / simple feelings of wearing with new gel type, which stops the contents from rolling down.
- This is a gel type improved treatment product for feet dead skin cell care.
- This is a peeling mask with simple socks style, so the contents don't roll down and you can enjoy simple and mild feet peeling.
- Disposable goods, Great effect even after single usage • Simple socks-typed peeling masks / simple feelings of wearing with new gel type, which stops the contents from rolling down.
- This is a gel type improved treatment product for feet dead skin cell care.
- This is a peeling mask with simple socks style, so the contents don't roll down and you can enjoy simple and mild feet peeling.

How to Use : 1. Wash your feet with lukewarm water and then remove water.
 2. Cut the middle of socks-typed mask and make it into 2 pieces.
 3. Wear the masks soaked with peeling gel just like you wear socks, and then fix the entrance with sticker.
 4. It would be better if you massage your feet softly to absorb the contents well with masks on 5. In 1 hour or 1 and an half hours later, remove the sheet and wash away the remnants with lukewarm water. 6. 4~7 days later after use, your dead feet skin cell will begin to peel off. (At this moment, don't try to peel off the dead skin cell by force, instead, wait until all dead skin cells peel off naturally and you can have smooth and soft feet.)



25

25. CHARCOAL MASK ON FACE (Charcoal Peel Off Mask 50g)

Absorbs wastes and excess sebum in the pores, shrinks the pores firmly and fills moist and water for the skin care without tightness!!
Strong Absorbing Texture Charcoal Mask
Blackhead Remover & Deep Pore Cleanse



26

26. RED LOESS MASK ON FACE (Red Clay Peel Off Mask 50g)

[모공케어 + 피부진정 + 수렴]

Absorbs wastes and excess sebum in the pores, shrinks the pores firmly and fills moist and water for the skin care without tightness!!
Strong Absorbing Texture Red Clay(Ocher) Mask
Blackhead Remover & Deep Pore Cleanse

건조한 겨울철, 집중케어 보습크림과
함께 쓰면 좋은 안티링클 마스크 팩!
#유네스코청정지역고창 #복분자
#피부보습 #주름개선 #탄력



에센스 마스크팩 10매
(고창산 복분자 5%)



27

27. Intensive Anti-wrinkle Blackraspberry Essence Mask (25g x 10pcs)

Anti-wrinkle • Moisturizing • Nutrition • Lifting

Rubus Coreanus fruit, highly effective in anti-oxidation, offers glow and radiance to the skin complexion. Carefully-selected oriental ingredients including peach tree flowers, Astragalus Membranaceus Root, Panax Notoginseng Roots, Polygonum Multiflorum Roots and Licorice Root offer nourishment and moisturization onto the skin. Adenosine contained in the mask boosts wrinkle-reduction effect, and Allantoin and Niacinamide provide skin brightening as well as smooth and resilient skin texture.

건조한 겨울철, 집중케어 보습크림과
함께 쓰면 좋은 미백 마스크 팩!
#유네스코청정지역고창 #블루베리
#피부미백 #피부보습 #활력



에센스 마스크팩 10매
(고창산 블루베리 5%)



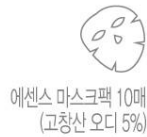
28

28. Intensive Hydrating Blueberry Essence Mask (25g x 10pcs)

Hydrating • Moisturizing • Nutrition • Vitality

The blueberry extract rich in anthocyanin, minerals and vitamin provides vitality and energy to your skin, and forms the moisturizing barrier to perfect smooth and healthy skin. Carefully selected oriental herb extracts including Rehmannia Chinensis Root, Prunus Armeniaca (Apricot) Kernel, Panax Ginseng Root, Polygonum Multiflorum Root, Dioscorea Opposita (Wild Yam) Root and Ophiopogon Japonicus Root provide water and nutrition to your skin to moisturize your skin. Niacinamide is contained to improve skin brightening and flower extracts provide soothing and moisturizing to sensitive and dry skin to keep the long-lasting moisture and radiance.

건조한 겨울철, 집중케어 보습크림과
함께 쓰면 좋은 수딩 마스크 팩!
#유네스코청정지역고창 #오디
#피부진정 #수렴 #주름개선



에센스 마스크팩 10매
(고창산 오디 5%)

29

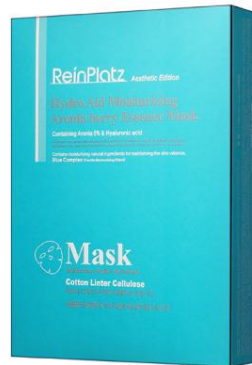
29. Intensive Soothing Mulberry Essence Mask (25g x 10pcs)

Soothing • Moisturizing • Anti-wrinkle

Nutritive components of mulberry leaves and fruits and silkworm extract soothe skin, convey water to keep skin texture smooth, and strictly selected herbal extracts provide water and nourishment to it to keep it luminous and resilient.

How to Use : 1. Remove moisture after washing face and condition skin by using skin toner. 2. After unfolding sheet upon opening pouch, place sheet on your face along the shape of eyes and closely attach it without any bubbles. 3. Remove mask after 20~30 minutes and gently tap on essence remaining on your skin for absorption. ※ Use make every 2-3 days for bouncy and moist skin.

건조한 겨울철, 집중케어 보습크림과
함께 쓰면 좋은 하이드로 보습 마스크 팩!
#유네스코청정지역고창 #아로니아
#수분공급 #피부생기 #주름개선



에센스 마스크팩 10매
(고창산 아로니아 5%)

30

30.Hydro Aid Moisturizing Aronia berry Essence Mask (25g x 10pcs)

Moisturizing • Vitality • Anti-wrinkle

Aronia Melanocarpa Fruit Extract rich in Anthocyanin, Tannin and vitamins tightens sagging skin and offers resilience and vitality. Carefully-selected oriental ingredients including Heartleaf Houttuynia, Peony Roots, Ulmus Davidiana Root, Lily Magnolia flowers, Adhesive Rehmannia and Sophora Flavescens Root allow hydrated, nourished and vital skin by boosting energy into your fatigued skin. Adenosine contained in the mask helps reduce wrinkles and along with the flower extracts offer long-lasting hydration to your sensitive and dry skin.

건조한 겨울철, 집중케어 보습크림과
함께 쓰면 좋은 영양 마스크 팩!

#4년에 한번 귀한 인삼열매 #진생베리
#주름개선 #영양 #피부탄력



에센스 마스크팩 10매
(인삼열매-진생베리 5%)

31

31. Hydro Aid Moisturizing Aronia berry Essence Mask (25g x 10pcs)

Nutrition • Lifting • Anti-wrinkle

Ginseng berry rich in saponin along with ginseng extracts brighten up the skin tone and offer resilience to the skin. Carefully-selected oriental ingredients including Heartleaf Houttuynia, licorice Roots, Peony Roots, Lily Magnolia flowers, Apricot seed and Ganoderma Lucidum (Mushroom) Extract provide hydration, nutrition and vitality. Adenosine and allantoin contained in the mask offers wrinkle reduction and skin resilience. It also allows more smooth and radiant skin texture.



32

32. Hydro Aqua Deep Moisturizing Ampoule Mask (25g x 10pcs)

Moisturizing formula and skin nutrients rejuvenates sensitive and dry skin with moisture, and ceramide, jojoba seed oil and squalene prevent moisture inside skin from evaporating to maintain oil/moisture balance. Hydrolyzed collagen and adenosine provide skin elasticity with anti-wrinkle effect, and carefully selected herbal medicine extracts effectively soothe skin irritated from external environment.

How to Use : 1. Remove moisture after washing face and condition skin by using skin toner. 2. After unfolding sheet upon opening pouch, place sheet on your face along the shape of eyes and closely attach it without any bubbles. 3. Remove mask after 20~30 minutes and gently tap on essence remaining on your skin for absorption. ※ Use make every 2-3 days for bouncy and moist skin.



33

33. Hydro Aqua Vita White Ampoule Mask (25g x 10pcs)

Skin nutrients improve skin with moisture, while increasing the protective power of skin from external harmful environment for clear and clean skin. Lemon water, pomegranate extract and niacinamide that is known as a whitening ingredient whiten dull skin with facial brightening effect, and carefully selected herbal medicine extracts provide shine and moisture to dry and rough skin.

How to Use : 1. Remove moisture after washing face and condition skin by using skin toner. 2. After unfolding sheet upon opening pouch, place sheet on your face along the shape of eyes and closely attach it without any bubbles. 3. Remove mask after 20~30 minutes and gently tap on essence remaining on your skin for absorption. ※ Use make every 2-3 days for bouncy and moist skin.



34

34. Extra Lifting Snail Ampoule Mask (25g x 10pcs)

Snail Secretion Filtrate rich in nourishment and a moisturizing factor (Hyaluronic acid) hydrate skin without vitality to keep it moist and vibrant and anti-wrinkle functionality substances keep loose skin firm and buoyant. Rosa Centifolia Flower Water, Rubus Coreanus Fruit Extract, Melissa Officinalis Leaf Extract, Rosemary Extract and carefully selected herbal extracts assist in soothing skin irritated from foreign environments.

How to Use : 1. Remove moisture after washing face and condition skin by using skin toner. 2. After unfolding sheet upon opening pouch, place sheet on your face along the shape of eyes and closely attach it without any bubbles. 3. Remove mask after 20~30 minutes and gently tap on essence remaining on your skin for absorption. ※ Use make every 2-3 days for bouncy and moist skin.



35

35. Deeply Purifying Propolis Ampoule Mask (25g x 10pcs)

Nourishing propolis and honey extract help you retain the barrier for your skin health. Sodium hyaluronate, betaine and other skin-moisturizing elements render your coarse, dry and sagging skin hydrated. Hydrolyzed collagen and adenosine boosts skin elasticity and offers wrinkle reduction. Carefully-selected oriental ingredients including Centella Asiatica, Witch Hazel and Rubus Coreanus fruit help you relieve your skin irritated by external environment.

How to Use : 1. Remove moisture after washing face and condition skin by using skin toner. 2. After unfolding sheet upon opening pouch, place sheet on your face along the shape of eyes and closely attach it without any bubbles. 3. Remove mask after 20~30 minutes and gently tap on essence remaining on your skin for absorption. ※ Use make every 2-3 days for bouncy and moist skin.



36

36. Intensely Hydrating Bird's Nest Ampoule Mask (25g x 10pcs)

Bird's Nest Extract (Swiftlet Nest Extract) rich in nourishment and a moisturizing factor (Hyaluronic acid) convey nourishment to tired skin and keep it moist, and whitening functionality substances purify and whiten skin. Camellia Oil, Blueberry Extract, Rosa Centifolia Flower Water, Witch Hazel Extract and carefully selected herbal extracts effectively soothe skin irritated from foreign environments.

How to Use : 1. Remove moisture after washing face and condition skin by using skin toner. 2. After unfolding sheet upon opening pouch, place sheet on your face along the shape of eyes and closely attach it without any bubbles. 3. Remove mask after 20~30 minutes and gently tap on essence remaining on your skin for absorption. ※ Use make every 2-3 days for bouncy and moist skin.



37

37. Ultra Skin Control Centella Ampoule Mask (25g x 10pcs)

Centella Asiatica with powerful soothing effect and a natural moisturizing factor (hyaluronic acid) hydrate tired and dry skin to keep it moist as well as soothing it, whitening functionality substances purify and whiten it. Witch Hazel Extract, Blueberry Extract, Rosa Centifolia Flower Water and carefully selected herbal extracts assist in recovering skin irritated from foreign environments.

How to Use : 1. Remove moisture after washing face and condition skin by using skin toner. 2. After unfolding sheet upon opening pouch, place sheet on your face along the shape of eyes and closely attach it without any bubbles. 3. Remove mask after 20~30 minutes and gently tap on essence remaining on your skin for absorption. ※ Use make every 2-3 days for bouncy and moist skin.



38

38. Black raspberry Collagen Essence Mask(23g x 10pcs)

Black raspberry soothes skin damaged by foreign harmful environments and provides nourishment to assist in keeping skin vibrant. Contained collagen provides nourishment and firming to skin, and Diospyros Kaki Leaf Extract, Coffee Arabica Seed Extract, and Theobroma Cacao Extract calm down tired skin to assist in recovering it.

How to Use : 1. Remove moisture after washing face and condition skin by using skin toner. 2. After unfolding sheet upon opening pouch, place sheet on your face along the shape of eyes and closely attach it without any bubbles. 3. Remove mask after 20~30 minutes and gently tap on essence remaining on your skin for absorption. ※ Use make every 2-3 days for bouncy and moist skin.



39

39. Mulberry Collagen Essence Mask(23g x 10pcs)

Morus Alba Fruit Extract performs a function in brightening dark and dry skin and provides nourishment to keep skin transparent and luminous. Contained collagen provides nourishment and firming to skin, and Morus Alba Bark Extract and Chamomilla Recutita Leaf Extract improve dark complexion of skin and keep it luminous and smooth.

How to Use : 1. Remove moisture after washing face and condition skin by using skin toner. 2. After unfolding sheet upon opening pouch, place sheet on your face along the shape of eyes and closely attach it without any bubbles. 3. Remove mask after 20~30 minutes and gently tap on essence remaining on your skin for absorption. ※ Use make every 2-3 days for bouncy and moist skin.

40



40. Green Tea Hyaluronic Essence Mask(23g x 10pcs)

With powerful skin astringent and soothing effects of green tea extract, rapidly soothes very sensitive skin and assists in keeping skin vibrant. Hyaluronic acids are contained to convey moisture to dry and rough skin and to keep it moist, radiant and vibrant. Portulaca Oleracea Extract, Centella Asiatica Extract, and Houltuynia Cordata Extract provide vitality to skin tired from foreign irritation.

How to Use : 1. Remove moisture after washing face and condition skin by using skin toner. 2. After unfolding sheet upon opening pouch, place sheet on your face along the shape of eyes and closely attach it without any bubbles. 3. Remove mask after 20~30 minutes and gently tap on essence remaining on your skin for absorption. ※ Use make every 2-3 days for bouncy and moist skin.

41



41. Blueberry Hyaluronic Essence Mask(23g x 10pcs)

Anthocyanin and polyphenol of blueberry extract which is called super food assist in improving functions of skin barriers to soothe it and keep it moist and glossy. Hyaluronic acids are contained to convey moisture to dry and rough skin and to keep it moist, radiant and, Aronia Melanocarpa Fruit Extract, Malpighia Emarginata Seed Extract, and Wine Extract play a role of water protection layers and keep skin moist.

How to Use : 1. Remove moisture after washing face and condition skin by using skin toner. 2. After unfolding sheet upon opening pouch, place sheet on your face along the shape of eyes and closely attach it without any bubbles. 3. Remove mask after 20~30 minutes and gently tap on essence remaining on your skin for absorption. ※ Use make every 2-3 days for bouncy and moist skin.



42

42. Chrysanthemum Snail Essence Mask(23g x 10pcs)

Chrysanthemum extract assists in keeping skin vibrant and resilient providing firming to it. Snail Secretion Filtrate is contained to soothe dry and rough skin and keep it smooth and vibrant by providing nourishment. Coix Lacryma-Jobi Ma-yuen Seed Extract, Panax Ginseng Root Extract, and Ginkgo Biloba Leaf Extract control free oxygen radicals and provide nourishment to skin lacking in vibrancy to keep it healthy and firm from inside basically as well as improving skin texture.

How to Use : 1. Remove moisture after washing face and condition skin by using skin toner. 2. After unfolding sheet upon opening pouch, place sheet on your face along the shape of eyes and closely attach it without any bubbles. 3. Remove mask after 20~30 minutes and gently tap on essence remaining on your skin for absorption. ※ Use make every 2-3 days for bouncy and moist skin.



43

43. Rice Snail Essence Mask(23g x 10pcs)

Rice(Brown rice) extract assists in controlling skin's water and oil balance to evenly provide dry skin with water and nourishment and keep it transparent and flawless. Snail Secretion Filtrate is contained to soothe dry and rough skin and keep it smooth and vibrant by providing nourishment, and Glycine Max Seed Extract, SesamumIndicum Seed Extract, and Laminaria Japonica Extract provide nourishment to tired skin to assist in recovering vibrant and buoyant with vitality.

How to Use : 1. Remove moisture after washing face and condition skin by using skin toner. 2. After unfolding sheet upon opening pouch, place sheet on your face along the shape of eyes and closely attach it without any bubbles. 3. Remove mask after 20~30 minutes and gently tap on essence remaining on your skin for absorption. ※ Use make every 2-3 days for bouncy and moist skin.



Thank you.